

## Swan Point Garvey

Working garveys of various sizes were once ubiquitous along the 90 miles of back bays behind the barrier islands on the New Jersey coast, used for tonging, clamming and fishing in the bays, gunning in the expansive marshes and bringing farm produce down river to market. In American Small Sailing Craft, Howard Chapelle goes into great length on the myriad variations of this hull type. Easy to build and burdensome, these boats gave an economical means of transport in sheltered waters all along the American East Coast. Proportions, size, and rig varied depending on locale, but construction was always simple and robust.

The Swan Point Garvey is designed for glued plywood construction, so it will be much lighter than the traditional boats, and will be happy living on a trailer. She can be rowed,

10 Frank Day Lane,

Brooklin ME 04616

207-359-9807

[Elery@DHylanBoats.com](mailto:Elery@DHylanBoats.com)

[Doug@DHylanBoats.com](mailto:Doug@DHylanBoats.com)

sculled, poled, sailed or fitted with a tiny outboard (preferably electric). If you enjoy camp cruising, there is good sleeping space for two with the amidships thwart "slipped". Just like its forebears, this will be a simple boat to build – well within the abilities of a weekend boatbuilder or a parent/child team.

Longtime Barnegat Bay sailor Russ Manheimer commissioned the design for this little sailing garvey, writing "Even not-so-pretty boats such as our humble New Jersey garvey deserve consideration for a new design for home builders using modern glued ply methods." Russ's input was invaluable in developing this design. He aspires to foster a comeback of the type, with a boat that "would work well along the quiet waters and creeks still to be found on our bay and elsewhere."

## SPECIFICATIONS

LOA – 15'

BEAM – 4' 8"

DRAFT, board up – 8"

DRAFT, board down – 2' 6"

WEIGHT – approx. 300 lb.

HULL TYPE – garvey

CONSTRUCTION – plywood

SUITABLE FOR – Somewhat protected waters.

TRAILERABLE – Yes

PROPULSION – 2 to 3 hp outboard or small electric

SPEED – Up to 5 kt.

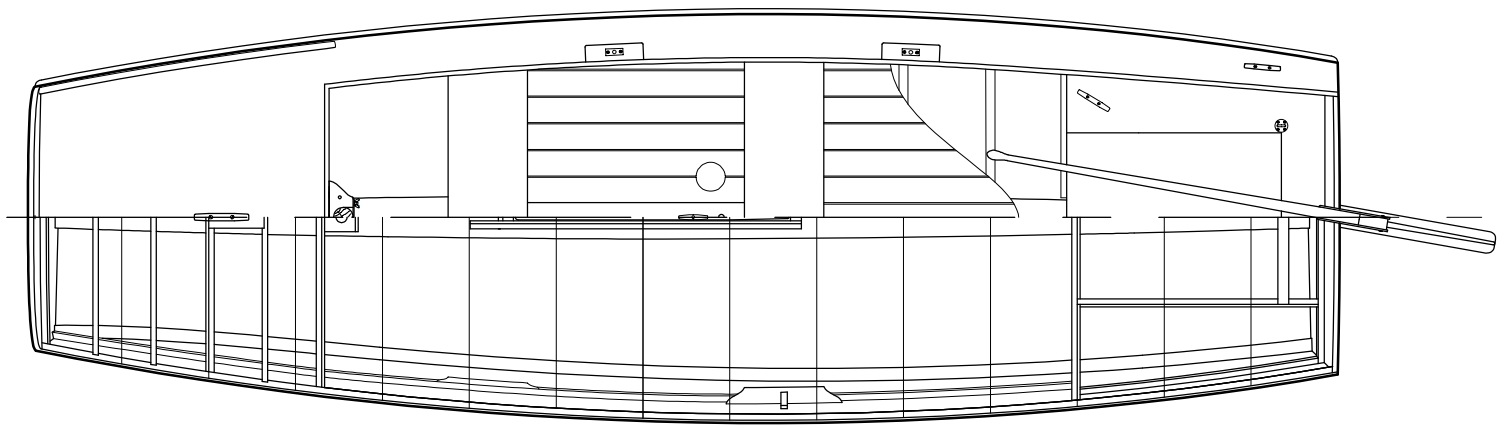
SKILL REQUIRED – Beginner

LOFTING REQUIRED – No, full size patterns included.

PLANS come on 7 sheets – lines & sail plan, construction, building jig, details, 3 sheets of full size patterns. Shipped rolled in a mailing tube.

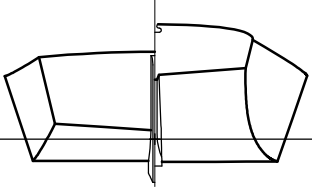
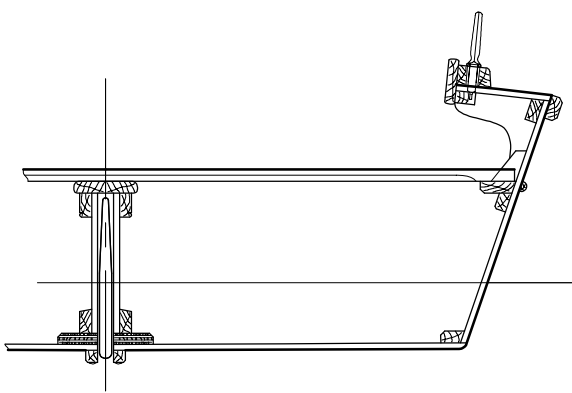
PLANS DETAIL – Above average

PLANS COST – \$200.00 plus S & H

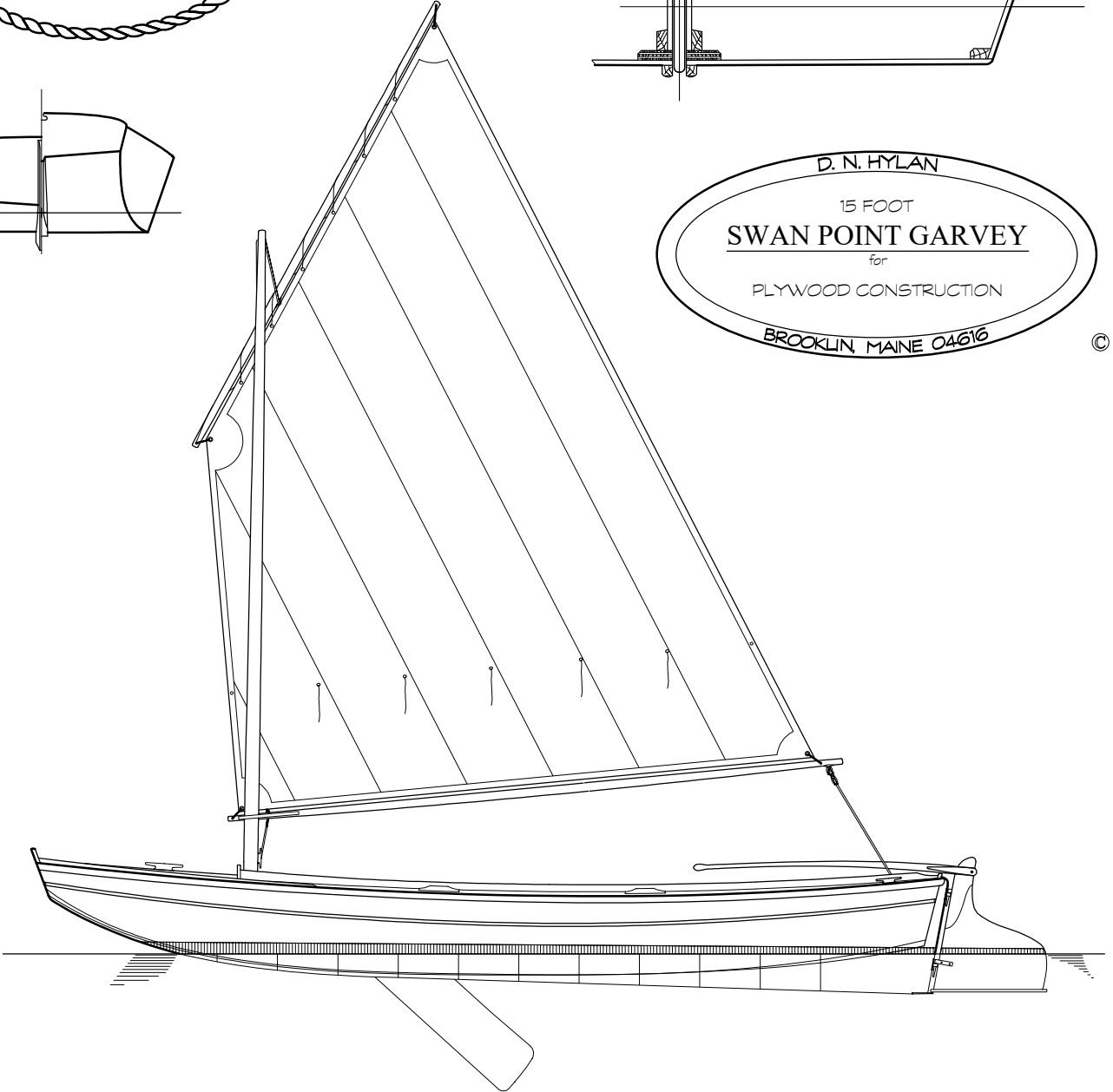


PARTICULARS

LOA	15'
BEAM	4' 8"
DRAFT	
BOARD UP	8"
BOARD DOWN	2' 6"
WEIGHT	approx. 300 lb.



D. N. HYLAN  
15 FOOT  
**SWAN POINT GARVEY**  
for  
PLYWOOD CONSTRUCTION  
BROOKLIN, MAINE 04616



©