

LITTLE CRAB

LITTLE CRAB is a smaller version of the Chesapeake Crab Skiff I drew several years ago. Bill Page, boatbuilder and traditional marine hardware tycoon, asked for a 14' version to use as a tender for his new power cruiser. He wanted a skiff with lots of stability that would be primarily powered by an electric trolling motor, but I was surprised by how well this boat rowed.

LITTLE CRAB is a foot shorter than Bill's boat, but it will still be a capacious tender for a larger yacht. She will row and tow reasonable well, and will provide reassuring stability when getting aboard.

As a sailing boat, LITTLE CRAB will make a fine weekend camp cruiser, with room for a couple of sleeping bags when the mid-ships slip thwart is removed. She would also make a great boat for young adventurers; light and shallow enough to be pushed off the beach (or that unseen shallow spot), simple and moderately sized rig, rewarding rowing, and good stability.

The boat is intended to be built upside down over widely spaced molds set up on a ladder frame. This is old fashioned technology by some people's standards – why not “stitch 'n' glue”? While the stitch and glue method is conceptually simple and unimposing, it can produce inexact hull shapes, and in my experience, it is no faster and far less pleasurable than my method. Any time saved in avoiding temporary molds and wooden stems and chines is more than taken up in shmooving and sanding epoxy and fiberglass. In the end, you will take more pride in having learned to shape a piece of wood than you will in the muscles you've built sanding epoxy fillets.

LITTLE CRAB will make a fine father & son project (no slight intended, ladies), but take a piece of advice from an old dad – even a small boat takes time and kids grow up fast. So, plan well, set aside enough time, and make it fun.

PARTICULARS:

LOA – 13'

LWL – 12' 2”

BEAM – 4' 5”

DRAFT – Rowing version, 6”. Sailing version, 9” board up, 30” board down.

HULL TYPE – Vee bottom chine hull.

10 Frank Day Lane,

Brooklin ME 04616

207-359-9807

Ellery@DHylanBoats.com

Doug@DHylanBoats.com

WEIGHT – Approximately 200 lb.

SAIL AREA – 76 sq. ft.

CONSTRUCTION – Plywood

SUITABLE FOR -- Somewhat protected waters

TRAILERABLE – Yes

SKILL LEVEL REQUIRED – Beginner

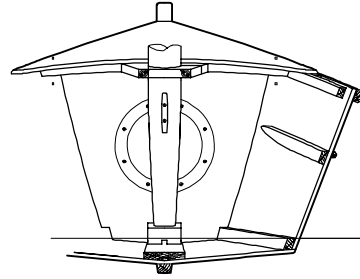
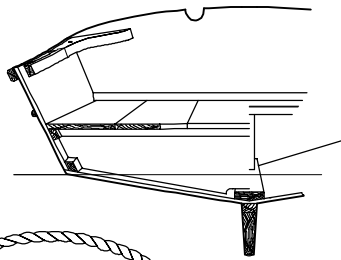
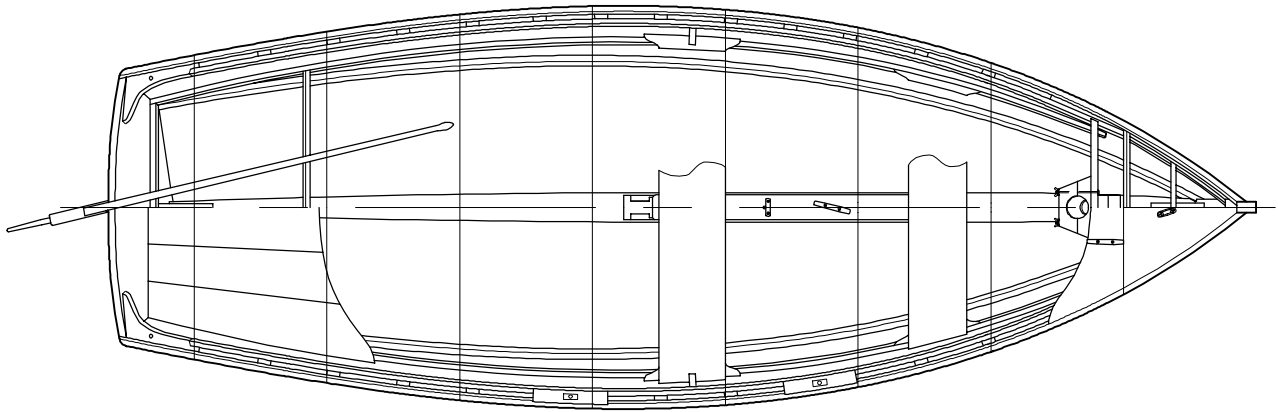
LOFTING REQUIRED – No

PLANS SHEETS: On five sheets: sail plan, lines plan, construction plan, building jig, full size patterns.

PLANS COST -- \$100.00 plus S & H (check for current rates). Plans are sent rolled, USPS Priority Mail. To order, please send check or money order to Hylan & Brown Boatbuilders, 10 Frank Day Lane, Brooklin, ME 04616. Or, order on line using PayPal at DHylanBoats.com.



This is Bill Pages boat – a foot longer than LITTLE CRAB.



PARTICULARS

LOA	13'
LWL	12'2"
BEAM	4'5"
DRAFT	6" ROWING VERSION
	SAILING VERSION:
	30" BOARD DOWN
	9" BOARD UP
WEIGHT	APPROX. 200 LB.

D. N. HYLAN
 13' SKIFF FOR SAIL AND OARS
 LITTLE CRAB
 STUDY PLAN
 NOT TO SCALE
 BROOKLIN MAINE 04616-0028 ©

