

CHESAPEAKE CRAB SKIFF

Based on a traditional crabbing skiff documentation by Howard Chapelle, this has proven to be a fast and stable boat that can carry a real load. While primarily a sailing skiff, she is reasonably handy under oars and easily driven with a tiny outboard. She also displays good manners when towed.

When I first drew the plans for this boat back in 1996, builders expected to loft their own boats and flotation was considered a prissy option. Times have changed! This updated plan includes full sized patterns and shows flotation compartments, as well as a few other modifications that I think are good improvements. The construction drawings are printed at a larger scale as well.

LOA – 15' 4"

BEAM – 4' 8"

DRAFT, board up – 10"

DRAFT, board down – 2' 5"

WEIGHT – approx. 250 lb.

HULL TYPE – deadrise

CONSTRUCTION – plywood

SUITABLE FOR – Somewhat protected waters.

TRAILERABLE – Yes

PROPULSION – 2 to 3 hp outboard or small electric

SPEED – Up to 6 kt.

SKILL REQUIRED – Beginner

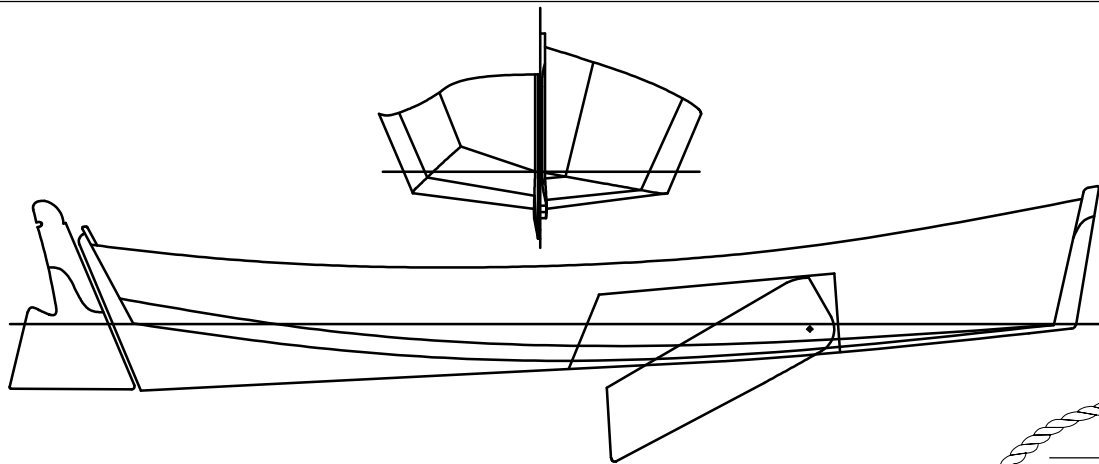
LOFTING REQUIRED – No, full size patterns included.

OTHER REFERENCES – Design review by Mike O'Brien, WoodenBoat #157:74

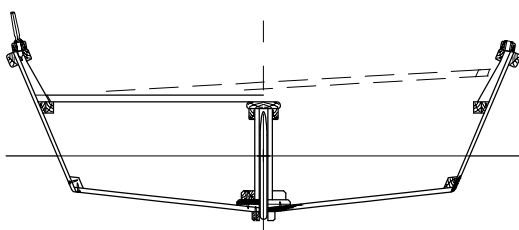
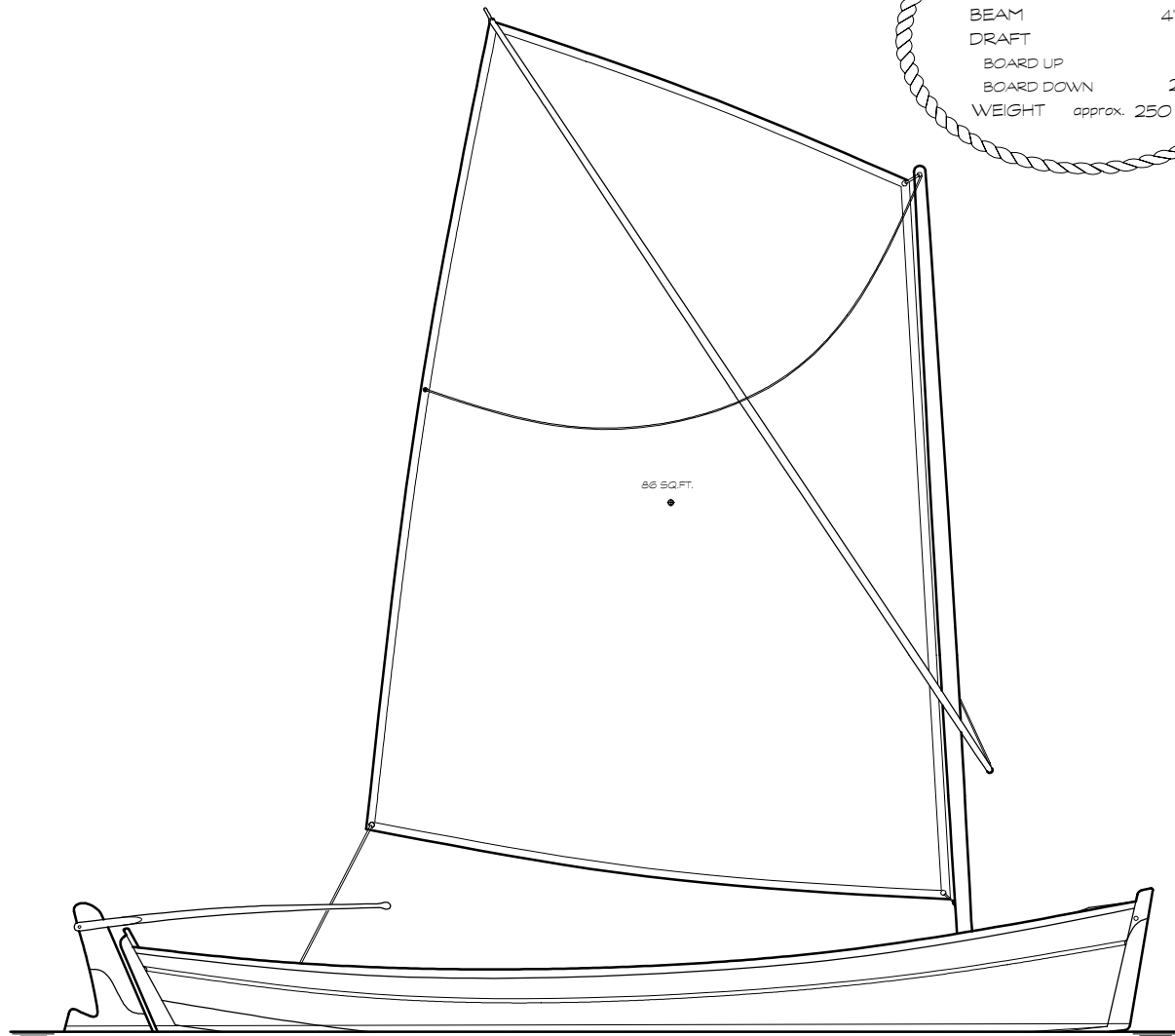
PLANS come on 7 sheets—lines, construction, setup jig, sprit rig, leg-o-mutton rig, full size patterns. Shipped rolled in a mailing tube.

PLANS DETAIL – Above average

PLANS COST – \$150.00 plus S & H



PARTICULARS	
LOA	15' 4"
BEAM	4' 8"
DRAFT	
BOARD UP	10"
BOARD DOWN	2' 5"
WEIGHT	approx. 250 LB.



D. N. HYLAN
 CHESAPEAKE CRAB SKIFF
 15' 4" LOA
 FOR PLYWOOD CONSTRUCTION
 STUDY PLAN
 BROOKLIN, MAINE 04616 ©