

25' CHESAPEAKE DEADRISE BOAT

WICOMICO

STUDY PLANS

The working craft of Chesapeake Bay have once again provided the inspiration for this design. The success of our Point Comfort outboard powered skiff has led to requests for plans for a more traditional round sterned, inboard powered sister.

The plans for WICOMICO contain information for two versions – an older styled fan-tailed version suitable for displacement speeds, and a semi-displacement version with the stern immersed, as seen on more recent Bay boats. At 25 feet, this is a small rendition of the traditional Bay work boat, and she has comparatively more beam and less displacement than a traditional older sister.

The fantail version will provide old time elegance for those who are not in too much of a hurry. Limited to hull speed (about 7 kts.) this version will make the best use of minimal power – the very smallest diesel, or for those who value their peace & quiet, an electric drive. The semi-displacement version is capable of speeds up to about 12 knots with 25 horsepower, or up to 17 knots with 50 hp.

The hull is built upside down over molds and a ladder frame. Heavy 3/4" plywood planking allows for a minimum of internal framing and makes future maintenance easier. This boat will be happy to live on a trailer, with no worries about drying out or opening seams. She uses the same plywood construction techniques that have proven successful in my Point Comfort skiffs, but her rounded stern will add a bit more challenge to the project.

Included are details for a cabin version and a shade top – the two could be combined for spartan cruising for those with sufficient pluck.

The plans consist of nine sheets: Lines, Outboard Profile, Construction Plan, Construction Sections, Alternative Arrangements, Building Jig, and three sheets of full sized patterns.

PARTICULARS

LOA – 25' 1"

LWL – 24' 2" semi-displacement version, 22' 2" fantail version.

BEAM – 7' 7"

DRAFT – 23"

DISPLACEMENT – Approximately 2000 lb.

HULL TYPE – Vee bottom chine hull.

CONSTRUCTION – Plywood

SUITABLE FOR – Somewhat protected waters

TRAILERABLE – Yes

PROPULSION – inboard diesel or electric drive up to 50 hp.

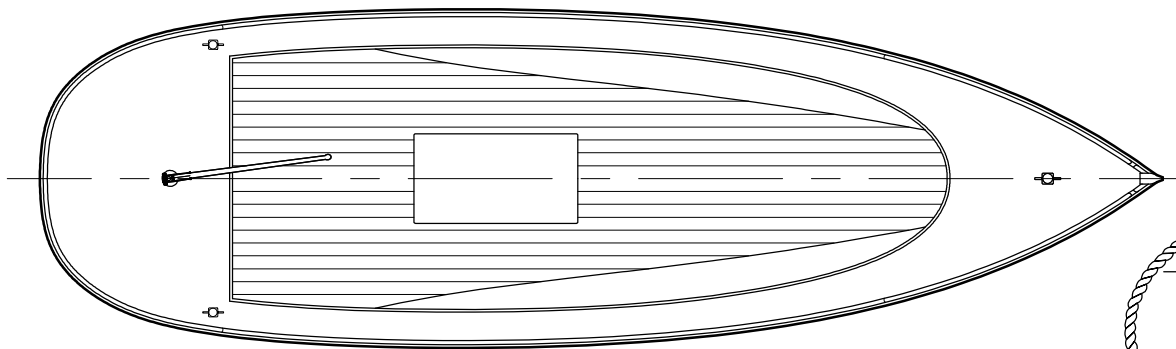
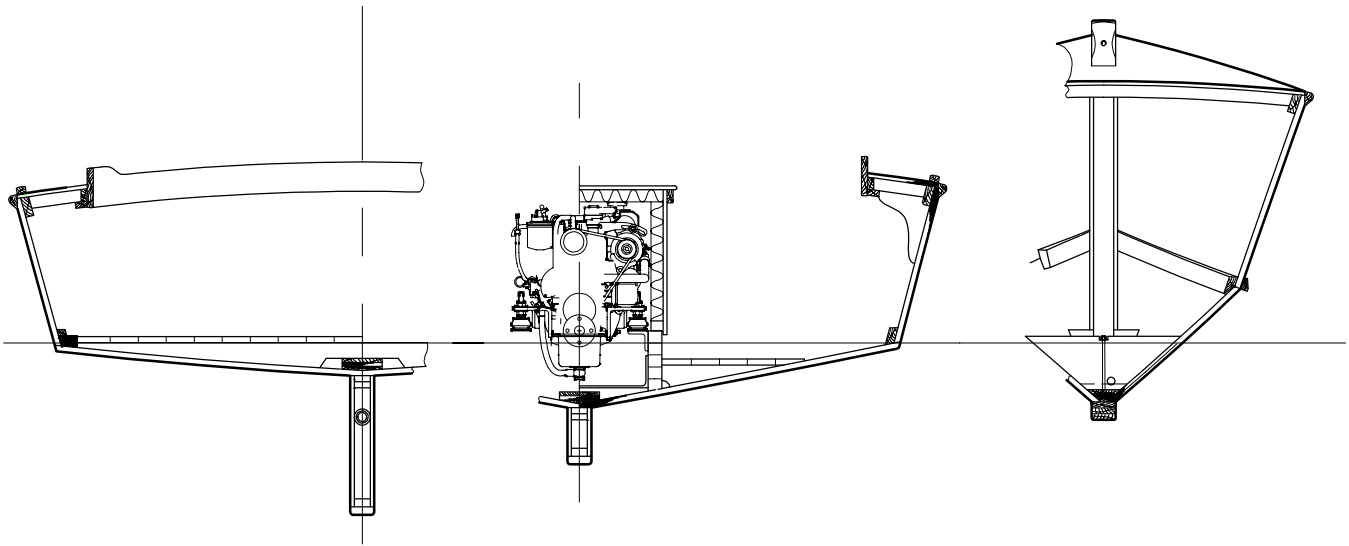
SPEED – Up to 17 knots, depending on version, motor and final weight.

SKILL REQUIRED – Intermediate

LOFTING REQUIRED – No, full size patterns are included

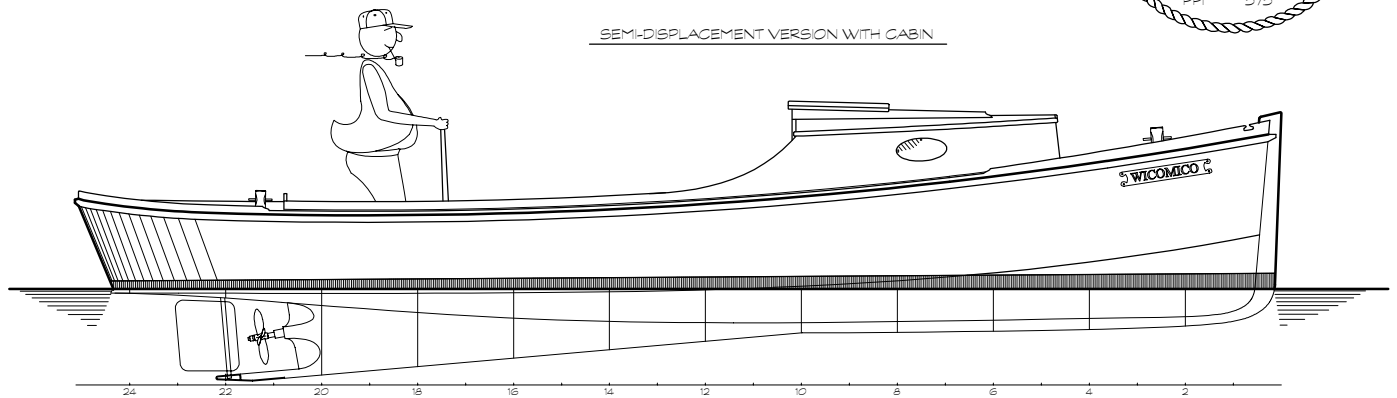
PLANS SHEETS – 9 sheets, above average detail

PLANS COST – Including building rights for one boat – \$300.00 plus S&H, (check for current rates). To order, please send check or money order to Hylan & Brown, 10 Frank Day Lane, Brooklin, ME 04616. Or, order on line using PayPal at DhylanBoats.com.

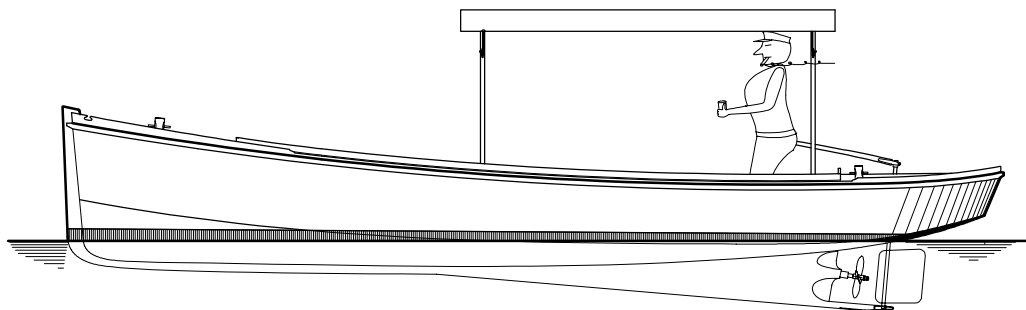


PARTICULARS	
LOA	25' 1"
LWL	24' 2"
BEAM	7' 7"
DRAFT	23"
DISP.	2000 LB.
D/L	72
PP	575

SEMI-DISPLACEMENT VERSION WITH CABIN



24 22 20 18 16 14 12 10 8 6 4 2



SHADE TOP ON FANTAL VERSION

D. N. HYLAN
 25' CHESAPEAKE
 DEADRISE BOAT
WICOMICO
 STUDY PLAN
 BROOKLIN MAINE 04616-0058