

TOP HAT STUDY PLANS

TOP HAT traces her heritage to the vee bottom boats designed by William. Hand in the early 1900s. Her lines, construction and propulsion have been updated, but the essential virtues remain – seaworthy and seakindly performance, good speeds with modest horsepower, handsome looks and ease of construction. A 50 HP outboard in a well gives very quiet operation, easy maintenance and good handling in reverse. Also shown is an alternative inboard engine version.

Plans are well detailed, and consist of 8 sheets: outboard profile, lines & offsets, inboard construction profile, construction sections, building jig, two detail sheets, and inboard diesel construction. A CD of photos in JPEG format taken during the construction of the prototype is available and will be a help to all builders.

PARTICULARS

LOA – 26' 5"

BEAM – 7' 3"

DRAFT, motor up – 15"

DISPLACEMENT, outboard version – 3200 lb.

HULL TYPE – Vee bottom chine

CONSTRUCTION – Strip plank topsides, double plywood bottom over sawn frames.

ALTERNATIVE CONSTRUCTION – Cold molded.

SUITABLE FOR – Somewhat protected waters.

TRAILERABLE – Yes

PROPULSION – 50 HP outboard or diesel inboard

SPEED – Up to 18 kt.

SKILL REQUIRED – Intermediate LOFTING REQUIRED – Yes

OTHER REFERENCES – Design review by Robert Stephens in WoodenBoat #168.

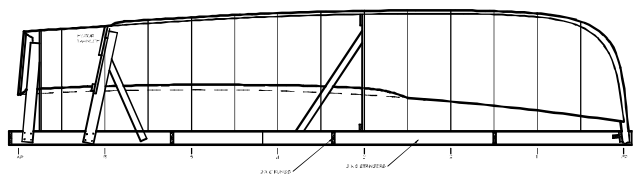
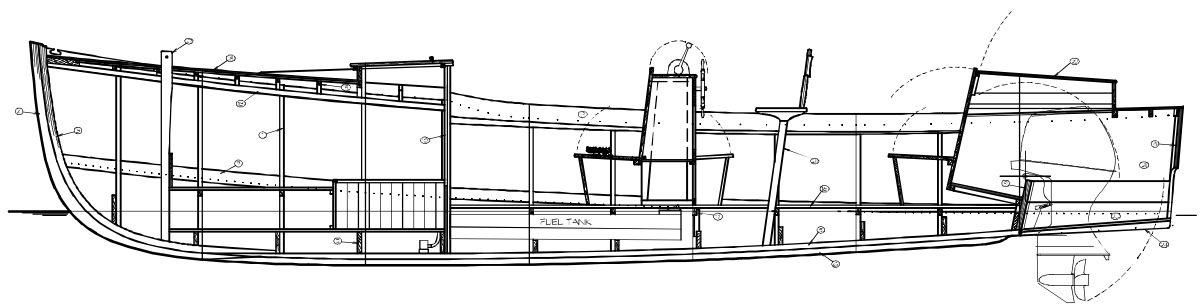
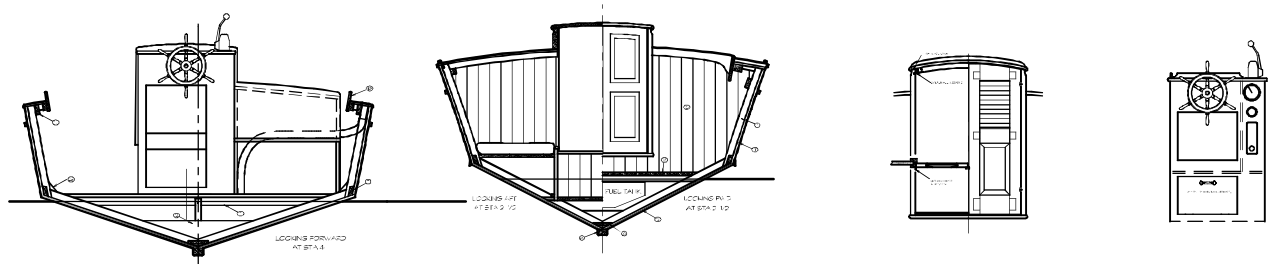
PLANS SHEETS – 8, Above average detail

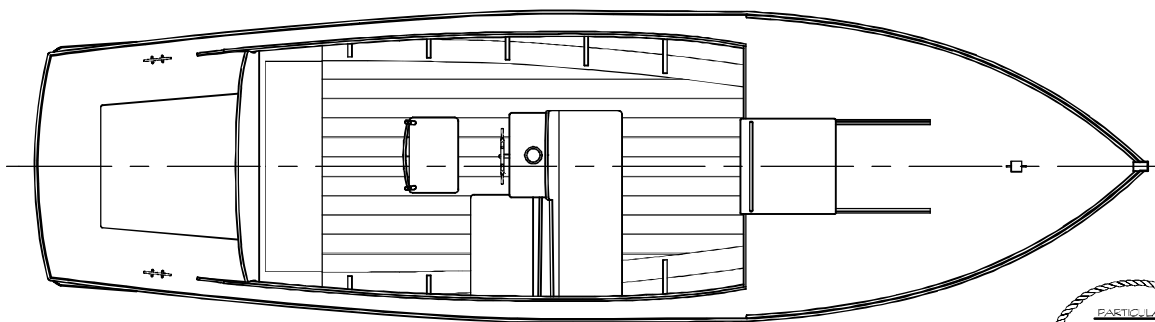
PLANS COST – \$300.00 plus S & H (check for current rates)

ALSO AVAILABLE: Photo CD, \$50.00

PLANS AVAILABLE FROM – Hylan & Brown, 10 Frank Day Lane, Brooklin ME 04616

OR go to www.dhylanboats.com and order the plans online using the Paypal ordering system (which accepts most major credit cards).





PARTICULARS	
LOA	28' 5"
BEAM	7' 3"
DRAFT	5'
DISPL.	3200 LB.

