

BEALS ISLAND LOBSTER BOAT

D'ANNA

STUDY PLANS

D'ANNA is an evolution of the Beals Island lobster boat, DIANA, which we restored in 2002. On re-launching, that boat was christened DIANA after the wife of her long time owner, Beals Island fisherman, historian and raconteur Avery Kelley. This modified design is named after Avery and Diana's daughter, D'Anna.

Maine lobstermen like to have their engines fairly far forward in the boat, in order to make more room in the cockpit for working their traps. Typically, they do not carry much fuel, often topping up when they deliver their catch at the end of each day. This means that a true lobster boat hull is designed to carry its displacement relatively far forward. Yachtsmen tend to prefer easy access to the cabin, and more occasional trips to the fuel dock. So, D'ANNA's lines have been modified to move her center of buoyancy slightly aft, to allow her engine to be mounted further aft and permit a somewhat larger fuel tank under the aft deck.

Other modifications include a slight increase in length to 30' and a beam increase to 8' 6", the legal trailering limit without permit. At this beam she is proportionately wider than her mother, but still narrow by today's standards, allowing for easier powering above theoretical hull speed. The freeboard has also been raised slightly, and the transom is proportionately wider. The extra size allows a self bailing cockpit. In spite of her extra size, D'ANNA is slightly lighter than her mother, due to her glued construction.

While DIANA's plans were for traditional plank on frame, these plans show cold molded construction. However, there is no reason why either boat cannot be built by either method. Please contact me if you are interested in alternative construction.

The full plans consist of four sheets: Lines Plan, Outboard Profile & Deck Plan, Inboard Profile & Framing Plan, and Construction Sections & Details. Also included is a CD with hull offsets, construction and finished photos of a similar boat, and other various and possibly helpful information.

PARTICULARS

LOA – 30'

LWL – 28' 9"

BEAM – 8' 6"

DRAFT – 2' 6"

DISPLACEMENT – 6300 LB.

HULL TYPE – Beals Island skeg type lobster boat

CONSTRUCTION – Cold molded wood

SUITABLE FOR – Somewhat protected waters

TRAILERABLE – With a heavy duty towing rig

PROPULSION – 75 hp inboard diesel

SPEED – Up to 14 knots with above engine

SKILL REQUIRED – Advanced

LOFTING REQUIRED – Hull lines are computer faired, CNC mold files available at extra cost and with restrictions.

PLANS SHEETS – 4 sheets plus Compact Disc with photos and other info.

PLANS PACKAGE DETAIL – Above average

PLANS COST – Includes building rights for one boat – \$200.00 plus S&H (check for current rates).

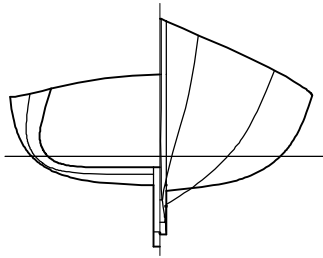
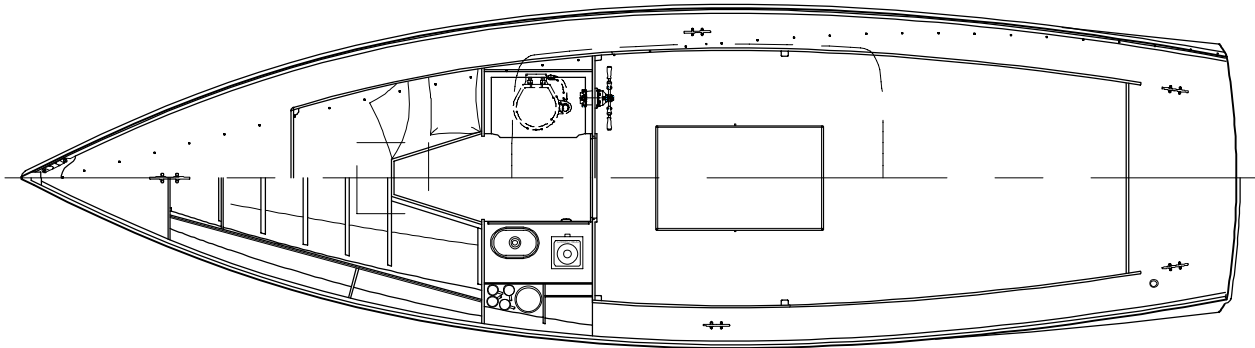
Doug Hylan
Brooklin, Maine
October 6, 2011

This photos are of BRENDA KAY, an intermediate design between DIANA and her

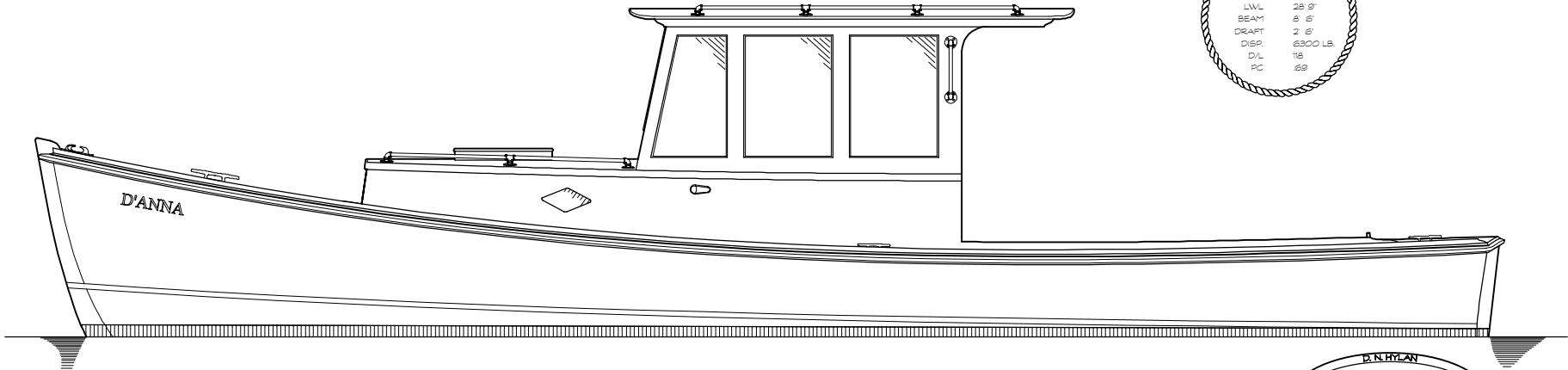


daughter D'ANNA. BRENDA KAY has the extra beam and cold molded construction of the new design, with the 28' 8" length of the mother.





PARTICULARS	
LOA	30'
LWL	28' 8"
BEAM	8' 6"
DRAFT	2' 6"
DISP.	6300 LB.
D/L	18
PC	.69



D. N. HYLAN
 BEAL'S ISLAND BOAT
D'ANNA
 STUDY PLAN
 BROOKLINE, MASS. 02148-0008 ©

