

D. N. HYLAN & ASSOCIATES, INC.

BOATBUILDERS

DIANA

A 29' Beals Island lobster boat

DIANA was built by Alvin Beal in the early 1950s on Beals Island, Maine. She incorporates the handsome low sheer and skeg construction that were a hallmark of that area.

In 2002, a new owner asked D. N. Hylan & Assoc. to rebuilt DIANA for use as a picnic boat for his Downeast summer home. The boats lines were lifted and her original construction documented. A new house and shelter were designed and the original propulsion system was re-configured.

These plans will be of interest to students of Maine lobster boat design, as well as potential builders. Most early lobster boats were built from builders models, and little documentation exists. Plans consist of four sheets: lines & offsets, outboard profile, inboard profile and construction sections.

PARTICULARS

LOA – 28' 8"

LWL – 27' 6"

BEAM – 8' 1"

DRAFT – 2' 3"

DISPLACEMENT – 6500 lb.

HULL TYPE – Downeast skeg type lobster boat.

CONSTRUCTION – Carvel planking over steam bent frames

SUITABLE FOR – Somewhat protected waters.

TRAILERABLE – With difficulty

PROPULSION – 125 hp diesel inboard

SPEED – Up to 18 kt.

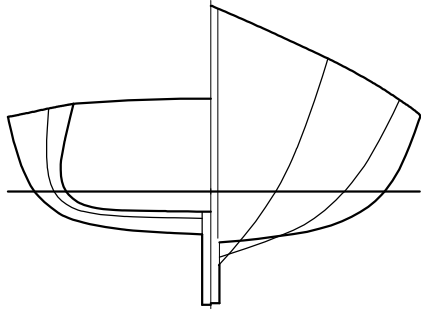
SKILL REQUIRED – Advanced

LOFTING REQUIRED – Yes

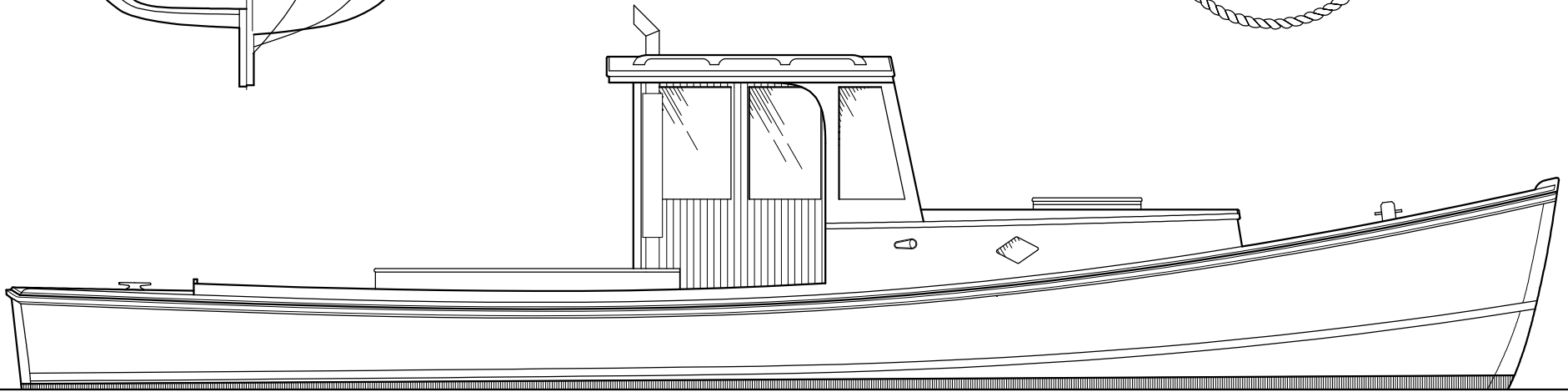
PLANS SHEETS – 4

PLANS DETAIL – Average

PLANS COST – \$120.00 plus \$15.00 shipping in US

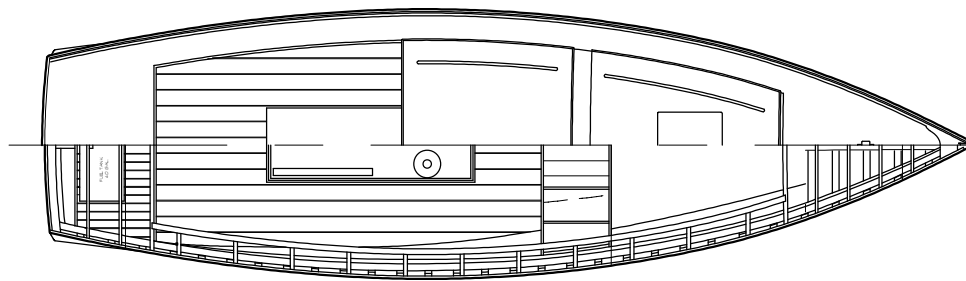
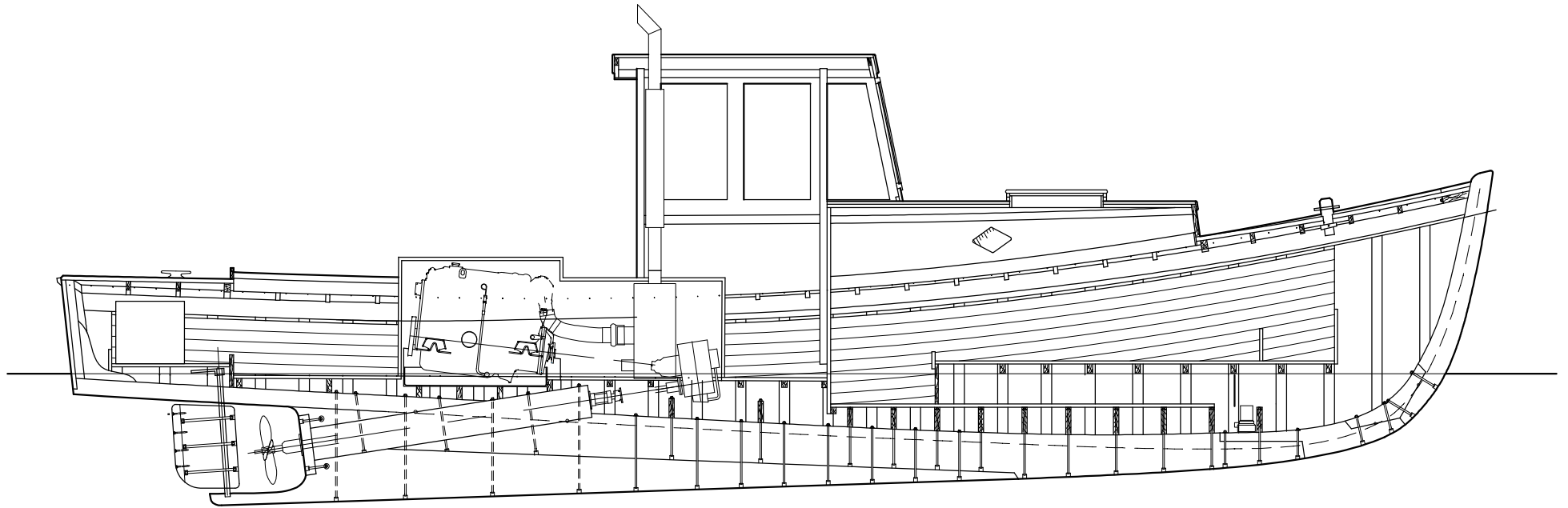


PARTICULARS	
LOA	28' 8"
LWL	27' 6"
BEAM	8' 1"
DRAFT	2' 3"
DISP.	6420 LB.
D/L	138
PC	.69



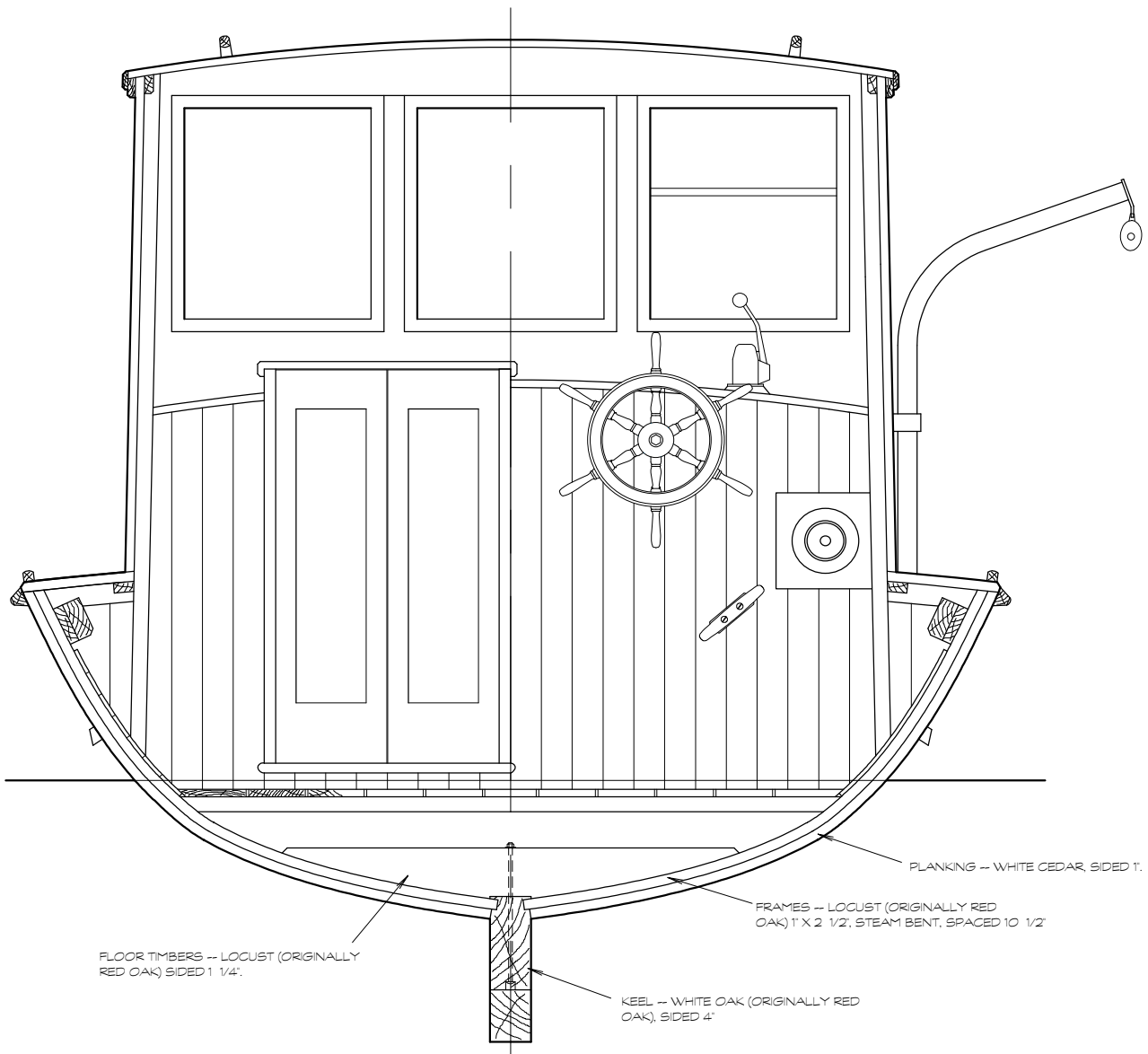
D. N. HYLAN  
BEAL'S ISLAND LOBSTER BOAT  
DIANA  
STUDY PLAN  
SCALE 1" = 1'  
BROOKLIN, MAINE 04616-0038





D. N. HYLAN  
BEAL'S ISLAND LOBSTER BOAT  
DIANA  
STUDY PLAN  
SCALE 1" = 1'  
BROOKLIN, MAINE 04616-0058





D. N. HYLAN  
 BEAL'S ISLAND LOBSTER BOAT  
 DIANA  
 STUDY PLAN  
 SCALE 1" = 1'  
 BROOKLIN, MAINE 04616-0058

